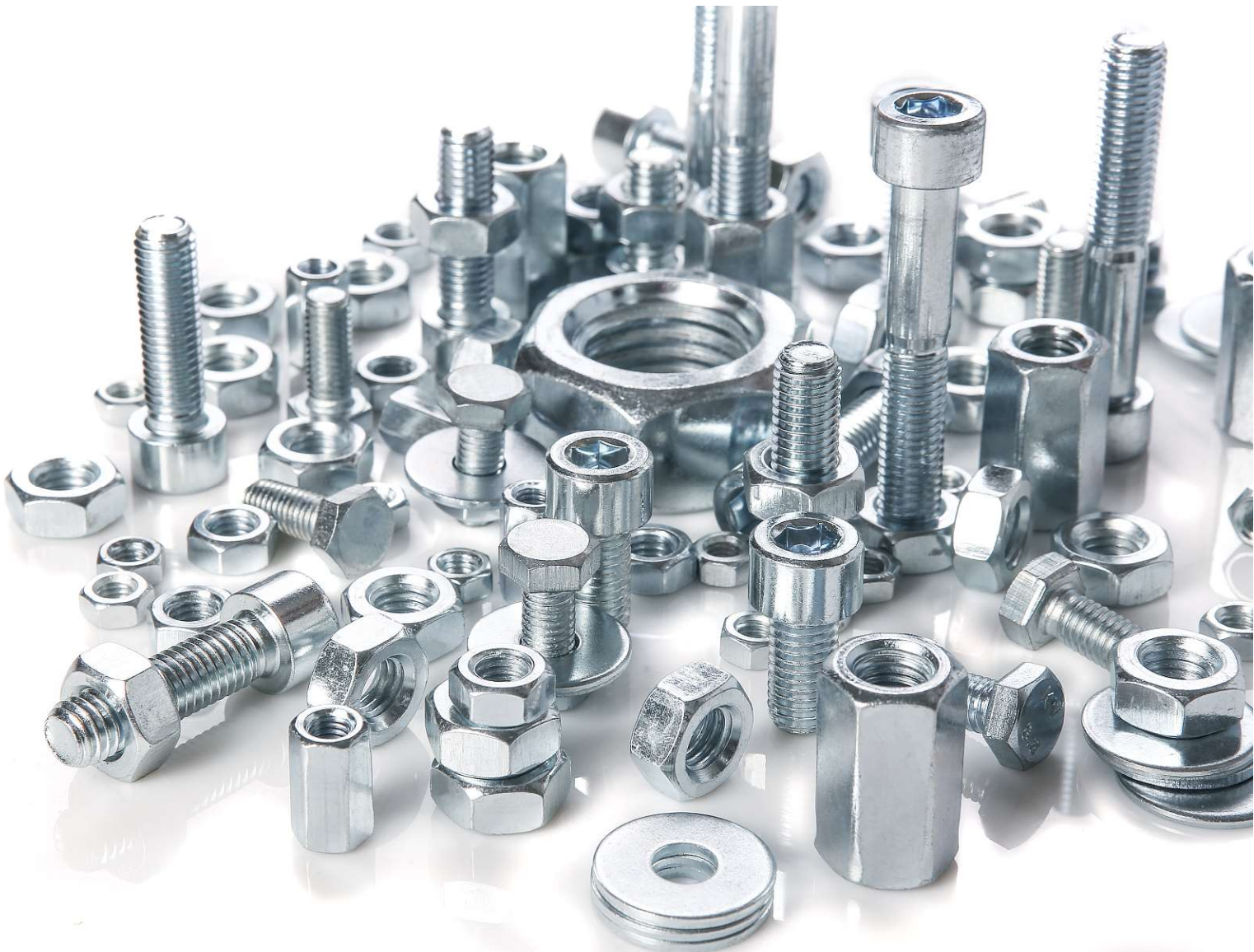




Jmet Corporation
Jiangsu Sainty International Group
Building material Branch



CONTENTS

ABOUT US

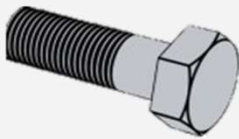
Chapter1



- Development History
- Company Structure
- Canton Fair
- Our Market
- Factory production

PRODUCTS

Chapter2



- Metric system
bolts, nuts, washers, thread rods
- Inch system
bolts, nuts, washers, thread rods

CASE SHOW

Chapter3



- Customized package
labels, bags
- Customized products
steel plate set, hexagonal bolts,

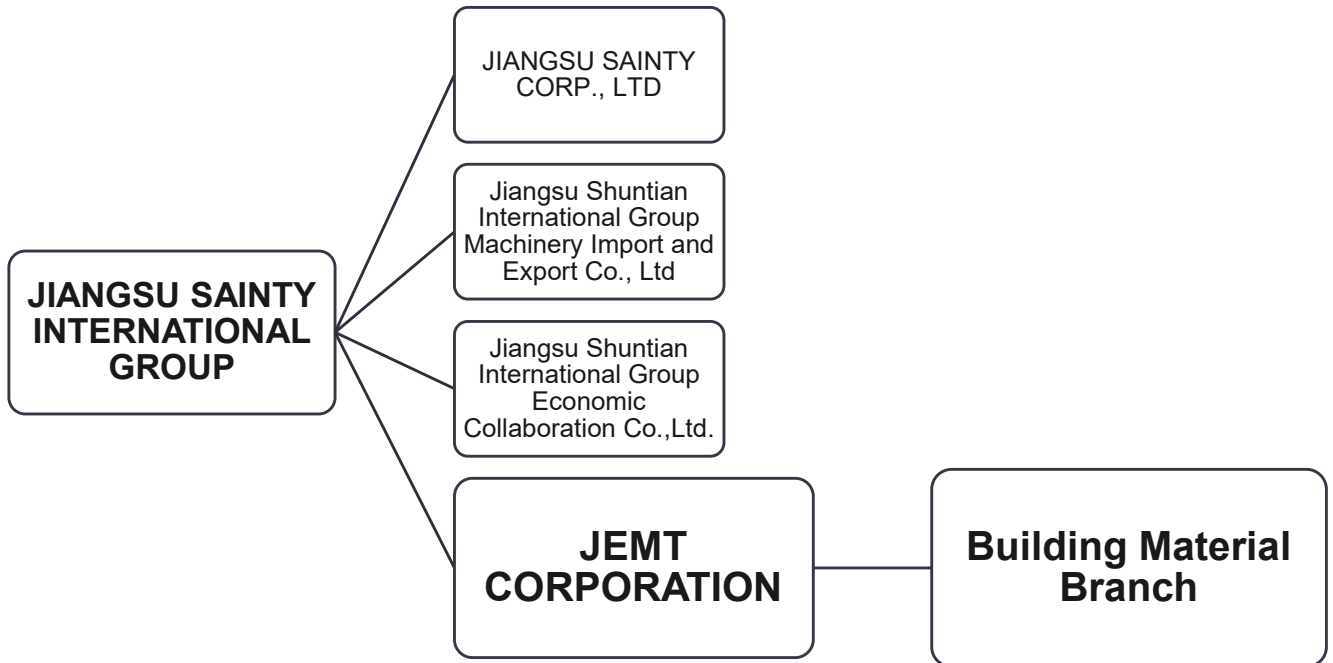
ABOUT US

Development History

- 1974** JMET **established**, belong to China **Minmetals Corporation**.
Mainly engaged in **mineral sales**
- 1980** Building material branch established.
Including **Fasteners, Hinges and Color Coated Rolls**
- 1996** JMET participated in the **Canton Fair** for the first time and has participated in **25 sessions** so far.
- 2004** JMET **joins Sainty** international Group and becomes its **wholly-owned subsidiary**.
- 2013** JMET joins **Jiangsu GUOXIN** investment Group Limited, which is the largest group under the Jiangsu Province government.
- 2021** In 2021, the building materials branch exports to **20** countries in the world, and the annual import and export volume totals **20 million USD**

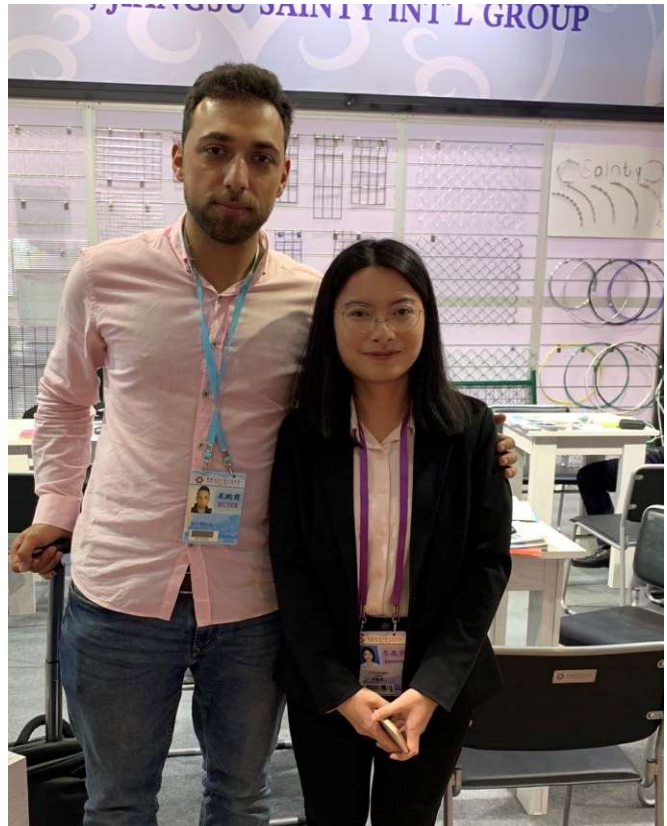
ABOUT US

Company Structure



ABOUT US

Canton Fair



As one of the **main exhibitors** of the **Jiangsu trading delegation**, since we first participated in the trade fair in **1996**, we have always had cordial exchanges with friends from all over the world at the **main booth** of the Jiangsu Province.



ABOUT US

Canton Fair



Our professional capabilities allow us to **provide professional solutions** to various problems in **on-site negotiations**.

Starting with samples, a **one-stop service** that keeps you from worries.



Efficient communication saves you time and money.

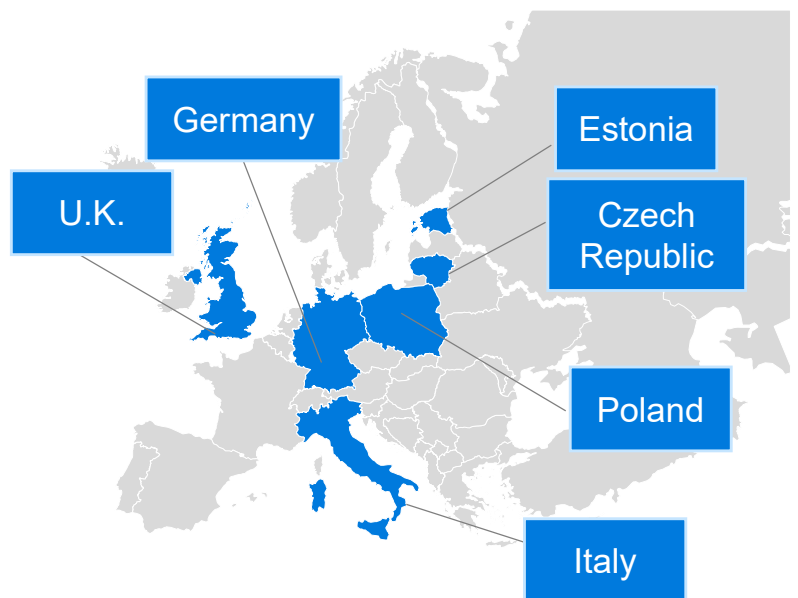
ABOUT US

Our market

In **2004**, we successfully entered the South American market. And according to the characteristics of local orders, integrate the supply chain. At present, we has a **complete supply chain system** to serve the market.

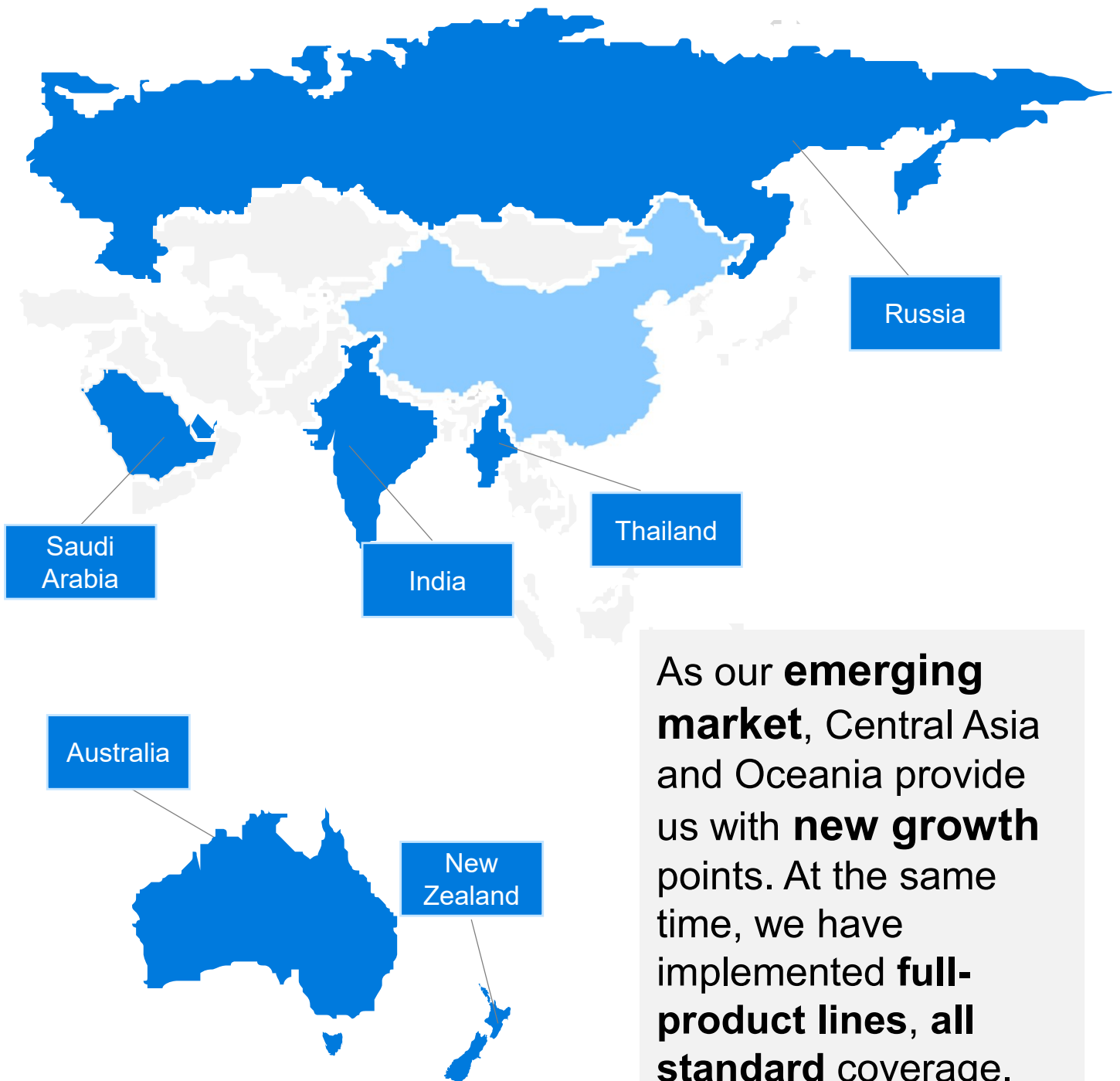


The European market is our premium market. We strictly follow **CE standards** and provide OME products for many **DIY supermarkets**.



ABOUT US

Our market



ABOUT US

Factory production

**Automated
environmentally
surface
treatment**



Cleaning

Drying



Hot dip galvanized

Cooling



PRODUCTS



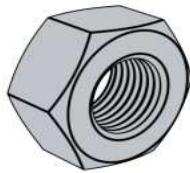
Hex bolt



Carriage bolt



Thread rod



Hex nut



Nylon nut



Flange nut



Sleeve wedge anchor



Drop in expansion anchor



Plastic anchor



Anchor bolt



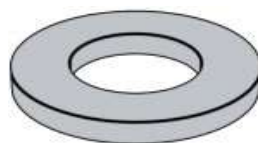
**Anchor bolt
Type JA**



**Anchor bolt
Type J**



**Anchor bolt
Type-J**



Flat washer

Grade:4.8/8.8/10.9

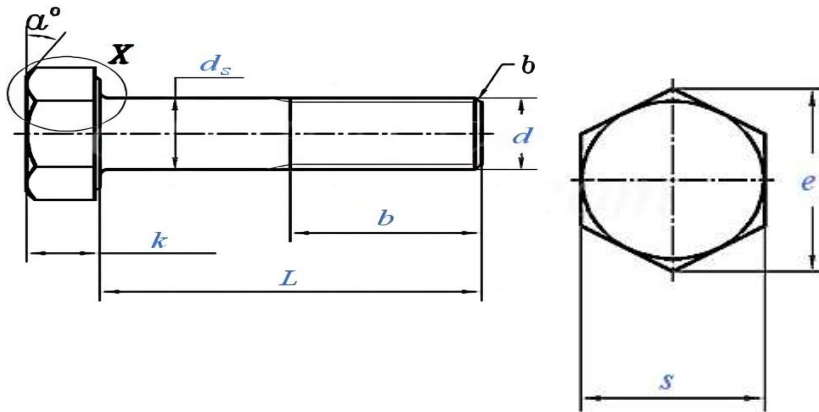
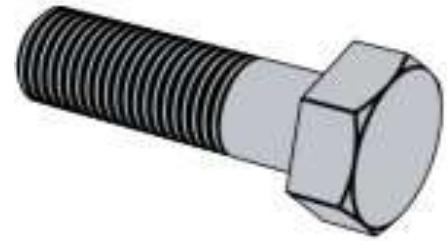
Size: M6-M52

Finished:

Plain,Zinc plated,
HDG,Black

PRODUCTS

Metric system



DIN EN ISO 4014

Grade:

4.8/8.8/10.9

Size:

M6-M52

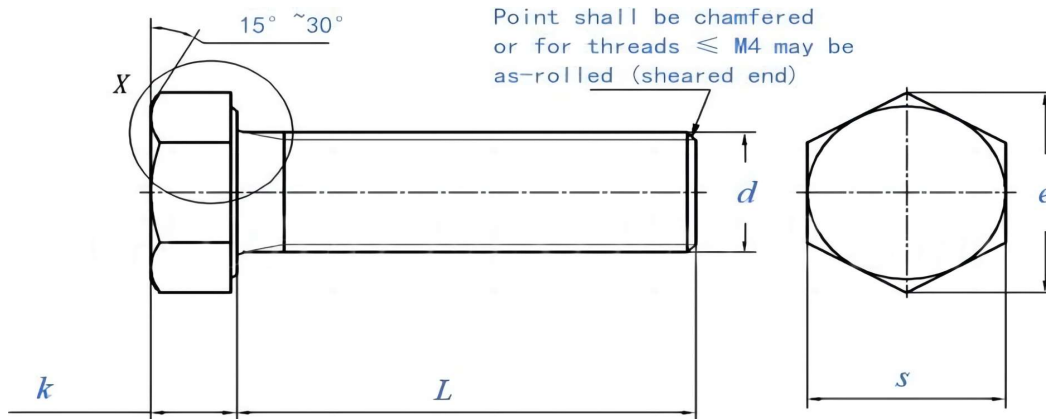
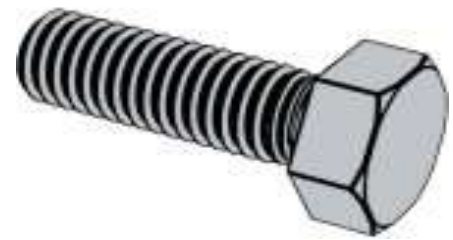
Finished:

Plain, Zinc plated,
HDG, Black

Screw Thread d	P	b			d _s	k	s
	Pitch	L ≤ 125	125 < L ≤ 200	L > 200	Grade A min	Nominal Size	max=nominal size
M6	1	18	24	37	5.82	4	10
M8	1.25	22	28	41	7.78	5.3	13
M10	1.5	26	32	45	9.78	6.4	16
M12	1.75	30	36	49	11.73	7.5	18
(M14)	2	34	40	53	13.73	8.8	21
M16	2	38	44	57	15.73	10	24
(M18)	2.5	42	48	61	17.73	11.5	27
M20	2.5	46	52	65	19.67	12.5	30
(M22)	2.5	50	56	69	21.67	14	34
M24	3	54	60	73	23.67	15	36
(M27)	3	60	66	79	-	17	41
M30	3.5	66	72	85	-	18.7	46
(M33)	3.5	-	78	91	-	21	50
M36	4	-	84	97	-	22.5	55
(M39)	4	-	90	103	-	25	60
M42	4.5	-	96	109	-	26	65
(M45)	4.5	-	102	115	-	28	70
M48	5	-	108	121	-	30	75
(M52)	5	-	116	129	-	33	80

PRODUCTS

Metric system



Screw Thread d	P	k	s
	Pitch	Nominal Size	max=nominal size
M6	1	4	10
M8	1.25	5.3	13
M10	1.5	6.4	16
M12	1.75	7.5	18
(M14)	2	8.8	21
M16	2	10	24
(M18)	2.5	11.5	27
M20	2.5	12.5	30
(M22)	2.5	14	34
M24	3	15	36
(M27)	3	17	41
M30	3.5	18.7	46
(M33)	3.5	21	50
M36	4	22.5	55
(M39)	4	25	60
M42	4.5	26	65
(M45)	4.5	28	70
M48	5	30	75
(M52)	5	33	80
M56	5.5	35	85
(M60)	5.5	38	90
M64	6	40	95

DIN EN ISO 4017 HEX BOLT FULL THERAD

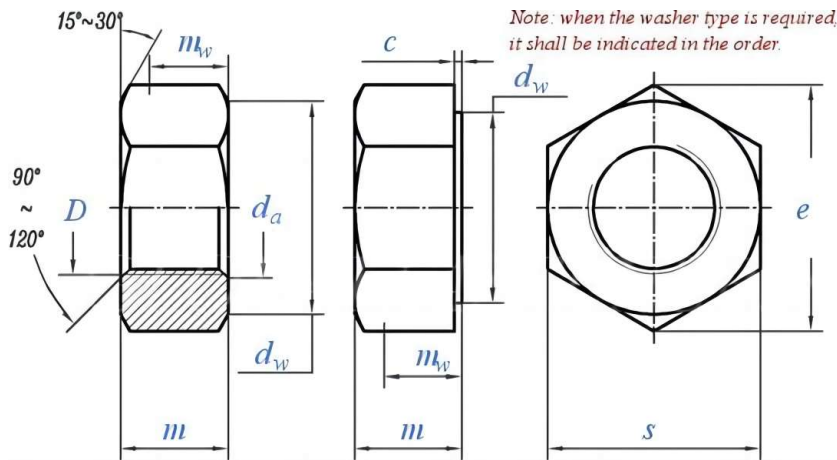
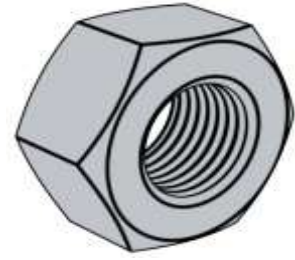
Grade:
4.8/8.8/10.9

Size:
M6-M64

Finished:
Plain, Zinc plated,
HDG, Black

PRODUCTS

Metric system



DIN EN ISO 4032 HEX NUT

Thread Size D	P	d _a		m		s	
	Pitch	max	min	max	min	max=nominal size	min
M1.6	0.35	1.84	1.6	1.3	1.05	3.2	3.02
M2	0.4	2.3	2	1.6	1.35	4	3.82
M2.5	0.45	2.9	2.5	2	1.75	5	4.82
M3	0.5	3.45	3	2.4	2.15	5.5	5.32
(M3.5)	0.6	4	3.5	2.8	2.55	6	5.82
M4	0.7	4.6	4	3.2	2.9	7	6.78
M5	0.8	5.75	5	4.7	4.4	8	7.78
M6	1	6.75	6	5.2	4.9	10	9.78
M8	1.25	8.75	8	6.8	6.44	13	12.73
M10	1.5	10.8	10	8.4	8.04	16	15.73
M12	1.75	13	12	10.8	10.37	18	17.73
(M14)	2	15.1	14	12.8	12.1	21	20.67
M16	2	17.3	16	14.8	14.1	24	23.67
(M18)	2.5	19.5	18	15.8	15.1	27	26.16
M20	2.5	21.6	20	18	16.9	30	29.16
(M22)	2.5	23.7	22.00	19.4	18.10	34.00	33.00
M24	3	25.9	24.00	21.5	20.2	36	35
(M27)	3	29.1	27	23.8	22.5	41	40
M30	3.5	32.4	30	25.6	24.3	46	45
(M33)	3.5	35.6	33	28.7	27.4	50	49
M36	4	38.9	36	31	29.4	55	53.8
(M39)	4	42.1	39	33.4	31.8	60	58.8
M42	4.5	45.4	42	34	32.4	65	63.1
(M45)	4.5	48.6	45	36	34.4	70	68.1
M48	5	51.8	48	38	36.4	75	73.1
(M52)	5	56.2	52	42	40.4	80	78.1

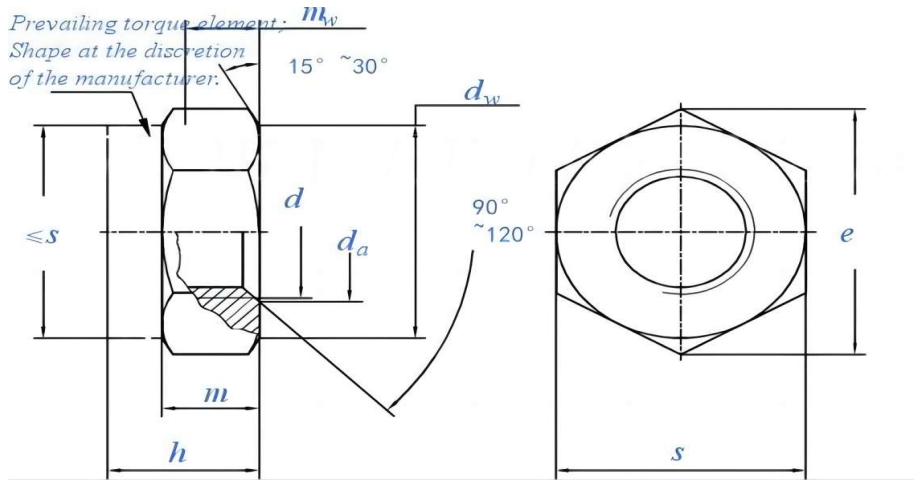
Grade:
4.8/8.8/10.9

Size:
M6-M52

Finished:
Plain, Zinc plated,
HDG, Black

PRODUCTS

Metric system



DIN 985 NYLON NUT

Thread Size d	P	h		m	s	
	Pitch Coarse thread	max=nomina l size	min	min	max=nomina l size	min
M6	1	6	5.7	4	10	10.73
M7	1	7.5	7.14	4.7	11	12.73
M8	1.25	8	7.64	5.5	13	16.73
M10	1.5	10	9.64	6.5	17	18.67
M12	1.75	12	11.57	8	19	21.67
M14	2	14	13.3	9.5	22	23.67
M16	2	16	15.3	10.5	24	26.16
M18	2.5	18.5	17.66	13	27	
M20	2.5	20	18.7	14	30	29.16
M22	2.5	22	20.7	15	32	31
M24	3	24	22.7	15	36	35
M27	3	27	25.7	17	41	40
M30	3.5	30	28.7	19	46	45
M33	3.5	33	31.4	22	50	49
M36	4	36	34.4	25	55	53.8
M39	4	39	37.4	27	60	58.8
M42	4.5	42	40.4	29	65	63.8
M45	4.5	45	43.4	32	70	68.1
M48	5	48	46.4	36	75	73.1

Grade:
4.8/8.8/10.9

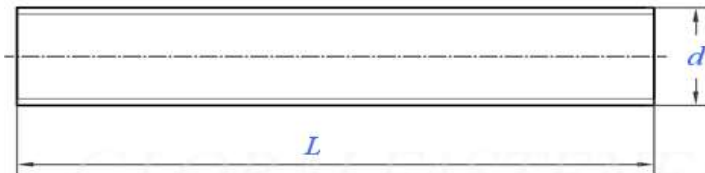
Size:
M6-M48

Finished:
Plain, Zinc plated,
HDG, Black

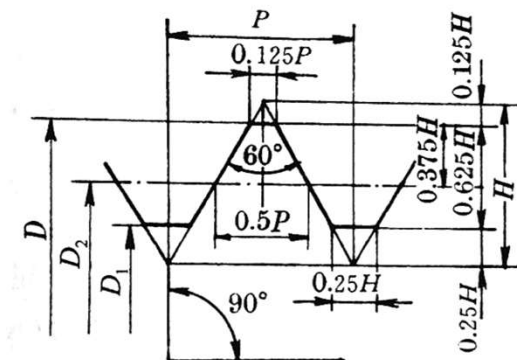
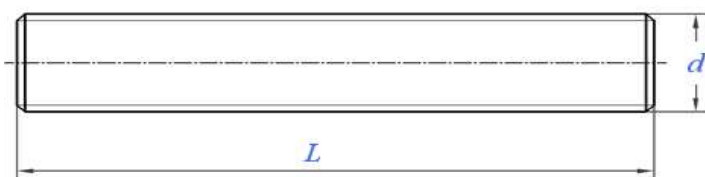
PRODUCTS

Metric system

Form A



Form B



Screw Thread d	P		
	Fine Thread Pitch	Fine Thread Pitch	Coarse Thread Pitch
M3	-	-	0.5
M4	-	-	0.7
M5	-	-	0.8
M6	-	-	1
M8	1	-	1.25
M10	1.25	1	1.5
M12	1.25	1.5	1.75
(M14)	1.5	-	2
M16	1.5	-	2
(M18)	1.5	-	2.5
M20	1.5	-	2.5
(M22)	1.5	-	2.5
M24	2	-	3
(M27)	2	-	3
M30	2	-	3.5
(M33)	2	-	3.5
M36	3	-	4
(M39)	3	-	4
M42	3	-	4.5
(M45)	3	-	4.5
M48	3	-	5
(M52)	3	-	5
M56	4	-	5.5
(M60)	4	-	5.5
M64	4	-	6

DIN 976A THREAD ROD

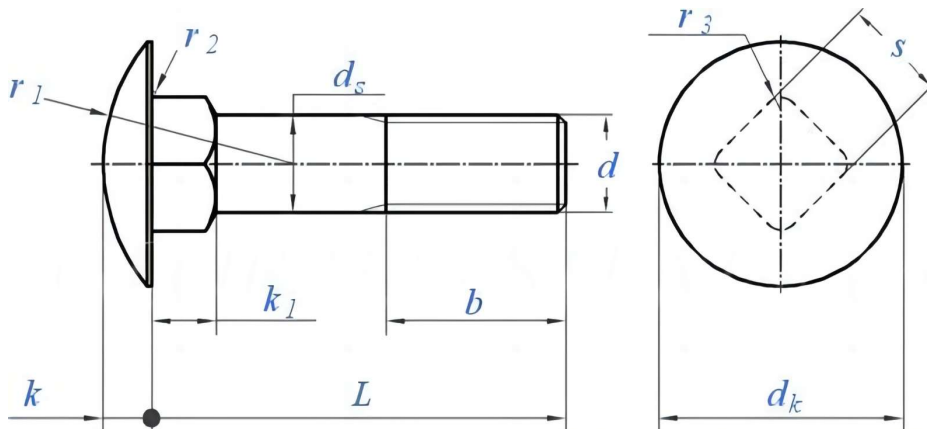
Grade:
4.8/8.8/10.9

Size:
M3-M64

Finished:
Plain, Zinc plated,
HDG, Black

PRODUCTS

Metric system



DIN 603 CARRIGE BOLT

Screw Thread		M5	M6	M8	M10	M12	M16	M20
d	Pitch	0.8	1	1.25	1.5	1.75	2	2.5
b	L ≤ 125	16	18	22	26	30	38	46
	125 < L ≤ 200	22	24	28	32	36	44	52
	L > 200	/	/	41	45	49	57	65
dk	max	13.55	16.55	20.65	24.65	30.65	38.8	46.8
	min	12.45	15.45	19.35	23.35	29.35	37.2	45.2
d	max	5	6	8	10	12	16	20
	min	4.52	5.52	7.42	9.42	11.3	15.3	19.16
k1	max	4.1	4.6	5.6	6.6	8.75	12.9	15.9
	min	2.9	3.4	4.4	5.4	7.25	11.1	14.1
k	max	3.3	3.88	4.88	5.38	6.95	8.95	11.05
	min	2.7	3.12	4.12	4.62	6.05	8.05	9.95
s	max	5.48	6.48	8.58	10.58	12.7	16.7	20.84
	min	4.52	5.52	7.42	9.42	11.3	15.3	19.16

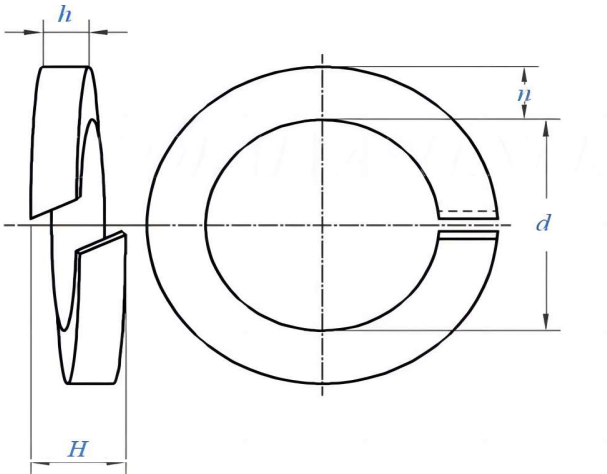
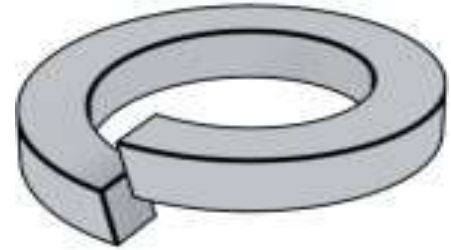
Grade:
4.8/8.8/10.9

Size:
M5-M20

Finished:
Plain, Zinc plated,
HDG, Black

PRODUCTS

Metric system



DIN 127 (B) SPRING WASHER Hardness 250 HV

Size:

Finished:

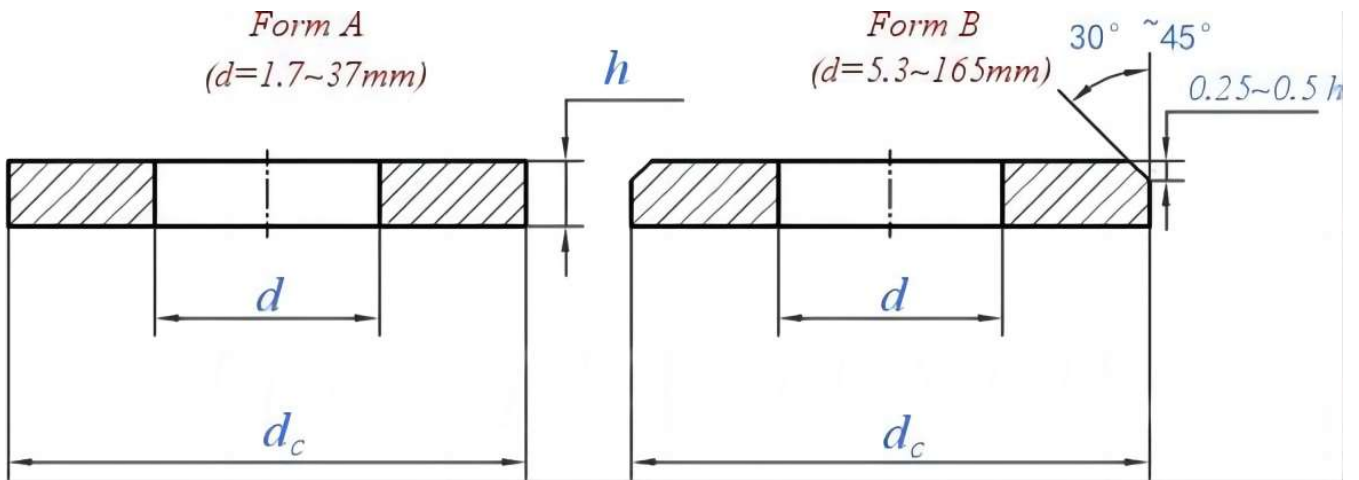
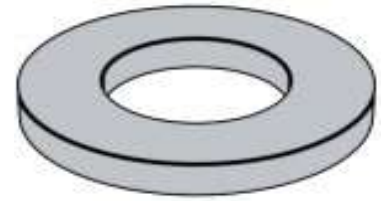
M5-M20

Plain, Zinc plated, HDG, Black

Nominal Diameter	d		n		h		H		per 1000 units ≈ kg
	min	max	max	min	max	min	min	max	
Φ4	4.1	4.4	1.6	1.4	1	0.8	1.8	2.1	0.18
Φ5	5.1	5.4	1.9	1.7	1.3	1.1	2.4	2.8	0.36
Φ6	6.1	6.5	2.65	2.35	1.7	1.5	3.2	3.8	0.83
Φ7	7.1	7.5	2.65	2.35	1.7	1.5	3.2	3.8	0.93
Φ8	8.1	8.5	3.15	2.85	2.1	1.9	4	4.7	1.6
Φ10	10.2	10.7	3.7	3.3	2.35	2.05	4.4	5.2	2.53
Φ12	12.2	12.7	4.2	3.8	2.65	2.35	5	5.9	3.82
Φ14	14.2	14.7	4.7	4.3	3.15	2.85	6	7.1	6.01
Φ16	16.2	17	5.2	4.8	3.7	3.3	7	8.3	8.91
Φ18	18.2	19	5.2	4.8	3.7	3.3	7	8.3	9.73
Φ20	20.2	21.2	6.2	5.8	4.2	3.8	8	9.4	15.2
Φ22	22.5	23.5	6.2	5.8	4.2	3.8	8	9.4	16.5
Φ24	24.5	25.5	7.25	6.75	5.2	4.8	10	11.8	26.2
Φ27	27.5	28.5	7.25	6.75	5.2	4.8	10	11.8	28.7
Φ30	30.5	31.7	8.25	7.75	6.2	5.8	12	14.2	44.3
Φ36	36.5	37.7	10.25	9.75	6.2	5.8	12	14.2	67.3
Φ39	39.5	40.7	10.25	9.75	6.2	5.8	12	14.2	71.7
Φ42	42.5	43.7	12.25	11.75	7.25	6.75	14	16.5	111
Φ45	45.5	46.7	12.25	11.75	7.25	6.75	14	16.5	117

PRODUCTS

Metric system



Size:

Finished:

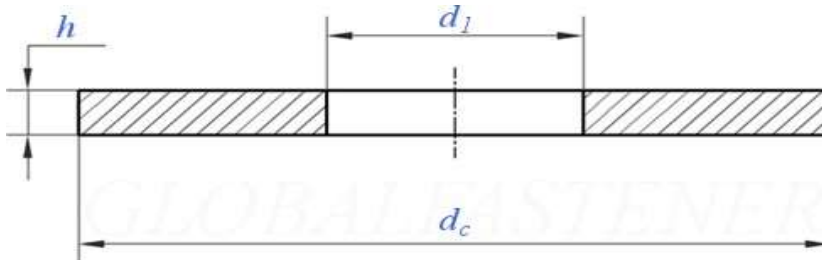
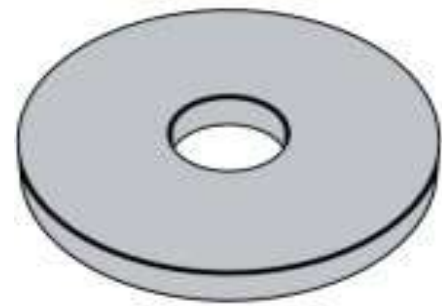
M5-M20

Plain, Zinc plated, HDG, Black

Size	M	d		dc		h			per 1000 units ≈ kg
	For thread size	min=nominal size	max	max=nominal size	min	Nominal Size	max	min	
Φ4.3	M4	4.3	4.48	9	8.64	0.8	0.9	0.7	0.308
Φ5.3	M5	5.3	5.48	10	9.64	1	1.1	0.9	0.443
Φ6.4	M6	6.4	6.62	12	11.57	1.6	1.8	1.4	1.02
Φ7.4	M7	7.4	7.62	14	13.57	1.6	1.8	1.4	1.39
Φ8.4	M8	8.4	8.62	16	15.57	1.6	1.8	1.4	1.83
Φ10.5	M10	10.5	10.77	20	19.48	2	2.2	1.8	3.57
Φ13	M12	13	13.27	24	23.48	2.5	2.7	2.3	6.27
Φ15	M14	15	15.27	28	27.48	2.5	2.7	2.3	8.62
Φ17	M16	17	17.27	30	29.48	3	3.3	2.7	11.3
Φ19	M18	19	19.33	34	33.38	3	3.3	2.7	14.7
Φ21	M20	21	21.33	37	36.38	3	3.3	2.7	17.2
Φ23	M22	23	23.33	39	38.38	3	3.3	2.7	18.3
Φ25	M24	25	25.33	44	43.38	4	4.3	3.7	32.3
Φ27	M26	27	27.33	50	49.38	4	4.3	3.7	43.7
Φ28	M27	28	28.33	50	49.38	4	4.3	3.7	42.3
Φ29	M28	29	29.33	50	49.38	4	4.3	3.7	40.9
Φ31	M30	31	31.39	56	55.26	4	4.3	3.7	53.6
Φ33	M32	33	33.62	60	58.8	5	5.6	4.4	77.4
Φ34	M33	34	34.62	60	58.8	5	5.6	4.4	75.3
Φ36	M35	36	36.62	66	64.8	5	5.6	4.4	94.3
Φ37	M36	37	37.62	66	64.8	5	5.6	4.4	92.1
Φ39	M38	39	39.62	72	70.8	6	6.6	5.4	136
Φ40	M39	40	40.62	72	70.8	6	6.6	5.4	133
Φ41	M40	41	41.62	72	70.8	6	6.6	5.4	130

PRODUCTS

Metric system



DIN 9021 FLAT WASHER

Size:

M3-M36

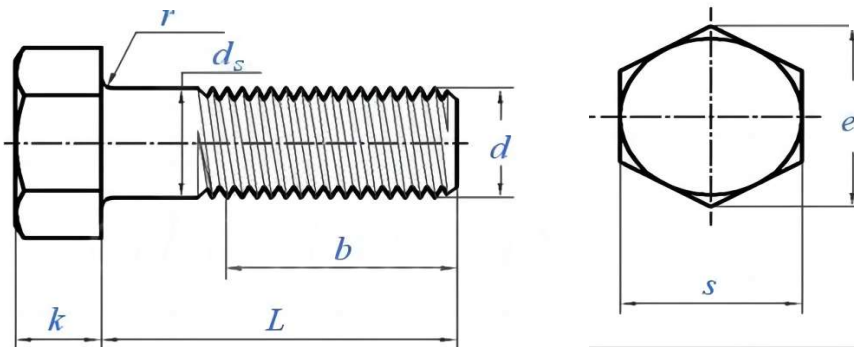
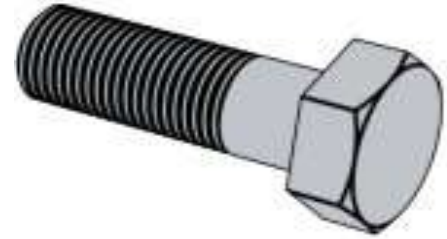
Finished:

Plain, Zinc plated, HDG, Black

Nominal Diameter	For thread diameter	d ₁		d _c		h			per 1000 units ≈ kg
		min=nominal size	max	max=nominal size	min	Nominal Size	max	min	
2.7	2.5	2.7	2.84	8	7.64	0.8	0.9	0.7	0.28
3.2	3	3.2	3.38	9	8.64	0.8	0.9	0.7	0.349
3.7	3.5	3.7	3.88	11	10.57	0.8	0.9	0.7	0.529
4.3	4	4.3	4.48	12	11.57	1	1.1	0.9	0.774
5.3	5	5.3	5.48	15	14.57	1.2	1.4	1	1.46
6.4	6	6.4	6.62	18	17.57	1.6	1.8	1.4	2.79
7.4	7	7.4	7.62	22	21.48	2	2.2	1.8	5.29
8.4	8	8.4	8.62	24	23.48	2	2.2	1.8	6.23
10.5	10	10.5	10.77	30	29.48	2.5	2.7	2.3	12.2
13	12	13	13.27	37	36.38	3	3.3	2.7	22.2
15	14	15	15.27	44	43.38	3	3.3	2.7	31.6
17	16	17	17.27	50	49.38	3	3.3	2.7	40.9
20	18	20	20.52	56	54.1	4	4.6	3.4	67.4
22	20	22	22.52	60	58.1	4	4.6	3.4	76.8
26	24	26	26.84	72	70.1	5	6	4	139
33	30	33	34	92	89.8	6	7	5	273
39	36	39	40	110	107.8	8	9.2	6.8	522

PRODUCTS

Inch system



ASME B 18.2.1 Heavy Hex Bolts

Screw Thread d	d_s		s	k	b	
	max	min	Basic	Basic	L ≤ 6	6 < L
3/8	0.388	0.360	11/16	1/4	1.000	1.250
1/2	0.515	0.482	7/8	11/32	1.250	1.500
5/8	0.642	0.605	1-1/16	27/64	1.500	1.750
3/4	0.768	0.729	1-1/4	1/2	1.750	2.000
7/8	0.895	0.852	1-7/16	37/64	2.000	2.250
1	1.022	0.976	1-5/8	43/64	2.250	2.500
1-1/8	1.149	1.098	1-13/16	3/4	2.500	2.750
1-1/4	1.277	1.223	2	27/32	2.750	3.000
1-3/8	1.404	1.345	2-3/16	29/32	3.000	3.250
1-1/2	1.531	1.470	2-3/8	1	3.250	3.500
1-5/8	1.658	1.591	2-9/16	1-3/32	3.500	3.750
1-3/4	1.785	1.716	2-3/4	1-5/32	3.750	4.000
1-7/8	1.912	1.839	2-15/16	1-1/4	4.000	4.250
2	2.039	1.964	3-1/8	1-11/32	4.250	4.500
2-1/4	2.305	2.214	3-1/2	1-1/2	4.750	5.000
2-1/2	2.559	2.461	3-7/8	1-21/32	5.250	5.500
2-3/4	2.827	2.711	4-1/4	1-13/16	5.750	6.000
3	3.081	2.961	4-5/8	2	6.250	6.500

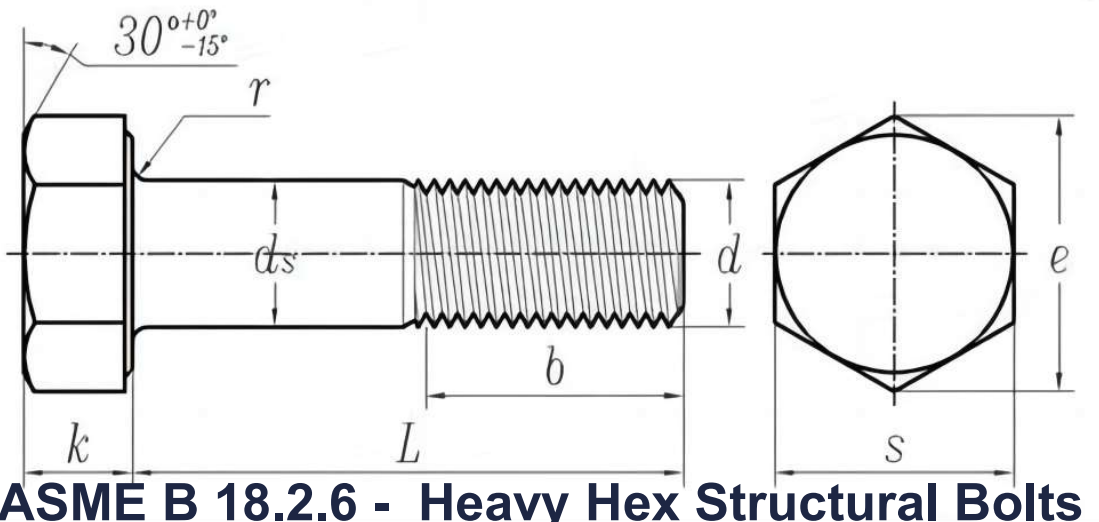
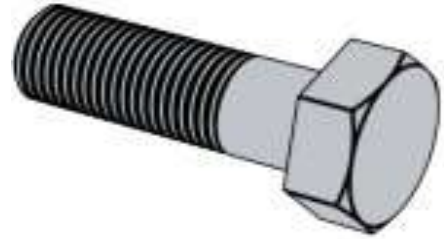
Grade:
2,5,8

Size:
1/2~1-1/2

Finished:
Plain, Zinc plated, HDG, Black

PRODUCTS

inch system



ASME B 18.2.6 - Heavy Hex Structural Bolts (ASTM A 325 / ASTM A 490)

Grade:

2,5,8

Size:

1/2~1-1/2

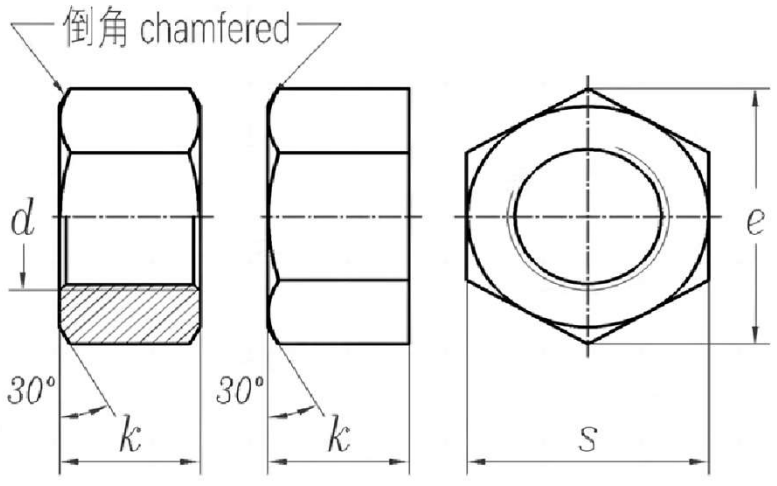
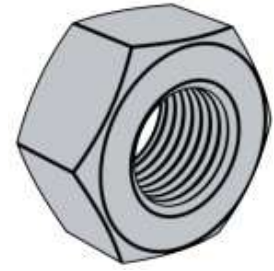
Finished:

Plain, Zinc plated,
HDG, Black

Screw Thread d	d_s			s			k		b
	max	min	Nominal Size	max	min	Nominal Size	max	min	Ref.
1/2	0.515	0.482	7/8	0.875	0.85	5/16	0.323	0.302	1
5/8	0.642	0.605	1-1/16	1.062	1.031	25/64	0.403	0.378	1.25
3/4	0.768	0.729	1-1/4	1.25	1.212	15/32	0.483	0.455	1.38
7/8	0.895	0.852	1-7/16	1.438	1.394	35/64	0.563	0.531	1.5
1	1.022	0.976	1-5/8	1.625	1.575	39/64	0.627	0.591	1.75
1-1/8	1.149	1.098	1-13/16	1.812	1.756	11/16	0.718	0.658	2
1-1/4	1.277	1.223	2	2	1.938	25/32	0.813	0.749	2
1-3/8	1.404	1.345	2-3/16	2.188	2.119	27/32	0.878	0.81	2.25
1-1/2	1.531	1.47	2-3/8	2.375	2.3	15/16	0.974	0.902	2.25

PRODUCTS

inch system



ASME B 18.2.2 - 2015 Hex Nuts (ASTM A563 / F594 / F467)

Grade:
2,5,8

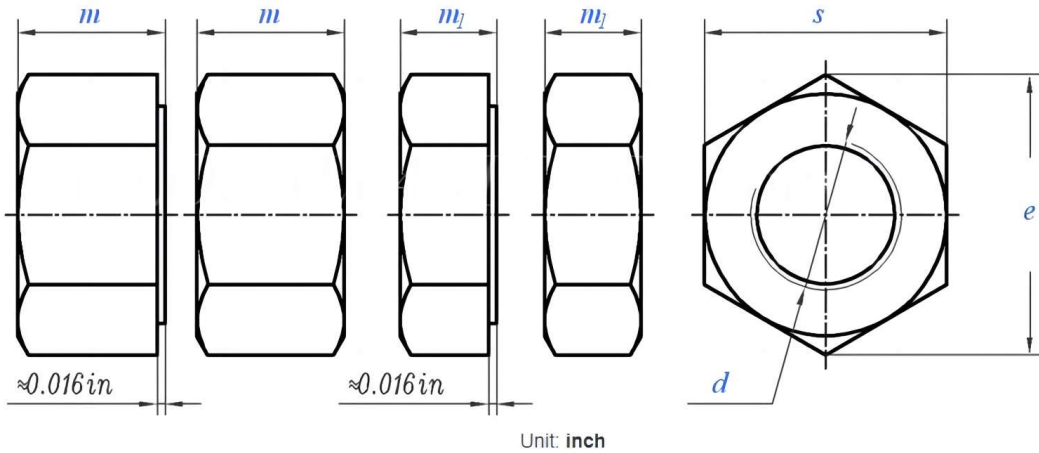
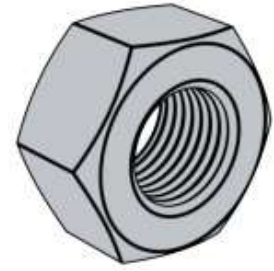
Size:
1-12#

Finished:
Plain, Zinc plated,
HDG, Black

Screw thread d	d	PP		Basic	s		e		k	
		UNC	UNF		min	max	min	max	min	max
0#	0.0600	-	80	5/32	0.150	0.156	0.171	0.180	0.043	0.050
1#	0.0730	64	72	5/32	0.150	0.156	0.171	0.180	0.043	0.050
2#	0.086	56	64	3/16	0.18	0.188	0.205	0.217	0.057	0.066
3#	0.099	48	56	3/16	0.18	0.188	0.205	0.217	0.057	0.066
4#	0.112	40	48	1/4	0.241	0.25	0.275	0.289	0.087	0.098
5#	0.125	40	44	5/16	0.302	0.312	0.344	0.361	0.102	0.114
6#	0.138	32	40	5/16	0.302	0.312	0.344	0.361	0.102	0.114
8#	0.164	32	36	11/32	0.332	0.344	0.378	0.397	0.117	0.130
10#	0.19	24	32	3/8	0.362	0.375	0.413	0.433	0.117	0.130
12#	0.216	24	28	7/16	0.423	0.438	0.482	0.505	0.148	0.161
1/4	0.25	20	28	7/16	0.423	0.438	0.482	0.505	0.178	0.193
5/16	0.312	18	24	9/16	0.545	0.562	0.621	0.650	0.208	0.225
3/8	0.375	16	24	5/8	0.607	0.625	0.692	0.722	0.239	0.257

PRODUCTS

inch system



ASME B 18.2.2 - 2015 Heavy Hex Nuts and Heavy Hex Jam Nuts

Grade:
2,5,8

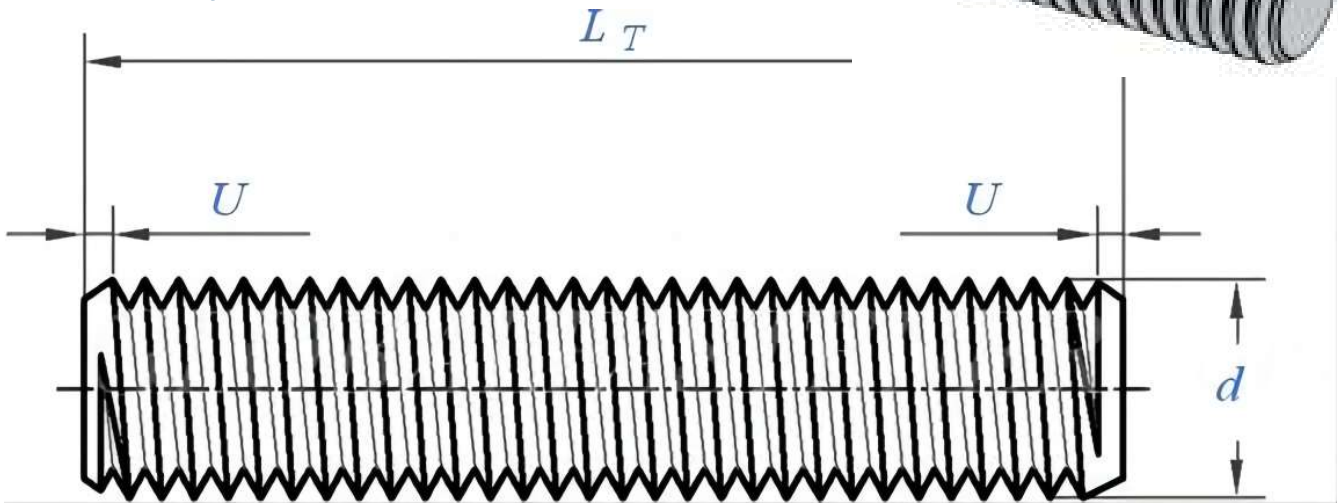
Size:
1/4~1-3/8

Finished:
Plain, Zinc plated,
HDG, Black

Screw Thread d	1/4	5/16	3/8	7/16	1/2	9/16	5/8	3/4	7/8	1	1-1/8	1-1/4	1-3/8	
d	0.2500	0.3125	0.3750	0.4375	0.5000	0.5625	0.6250	0.7500	0.8750	1.0000	1.1250	1.2500	1.3750	
PP	UNC	20	18	16	14	13	12	11	10	9	8	7	6	
	UNF	28	24	24	20	20	18	18	16	14	12	12	12	
	8-UN	-	-	-	-	-	-	-	-	-	-	8	8	
s	min	0.488	0.546	0.669	0.728	0.850	0.909	1.031	1.212	1.394	1.575	1.756	1.938	2.119
	max	0.500	0.562	0.688	0.750	0.875	0.938	1.062	1.250	1.438	1.625	1.812	2.000	2.188
e	min	0.556	0.622	0.763	0.830	0.969	1.037	1.175	1.382	1.589	1.796	2.002	2.209	2.416
	max	0.577	0.650	0.794	0.866	1.010	1.083	1.227	1.443	1.660	1.876	2.093	2.309	2.526
m	min	0.218	0.280	0.341	0.403	0.464	0.526	0.587	0.710	0.833	0.956	1.079	1.187	1.310
	max	0.250	0.314	0.377	0.411	0.504	0.568	0.631	0.758	0.885	1.012	1.139	1.251	1.378
m	min	0.156	0.186	0.216	0.247	0.277	0.307	0.337	0.398	0.458	0.519	0.579	0.687	0.747
	max	0.188	0.220	0.252	0.285	0.317	0.349	0.381	0.446	0.510	0.575	0.639	0.751	0.815

PRODUCTS

Inch system



ASME B 18.31.2 - thread studs (ASTM A354 / A449 / F593 / SAE J429)

Grade:
2,5,8

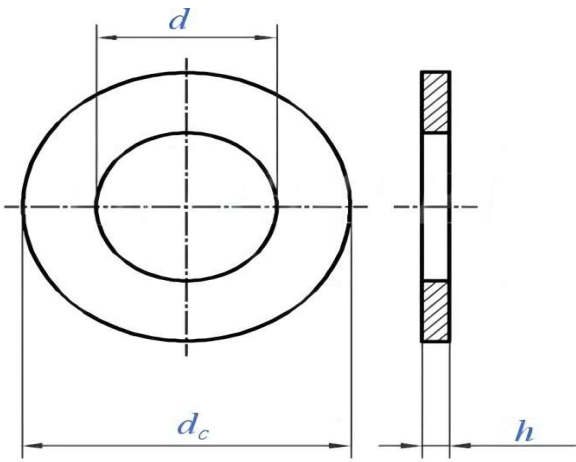
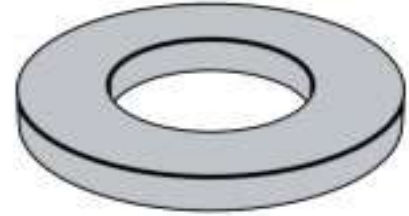
Size:
1/2~1-1/2

Finished:
Plain, Zinc plated,
HDG, Black

Screw Thread d	d	PP			u		
		UNC	UNF	8UN	max		
					UNC	UNF	8UN
1/4	0.25	20	28	-	0.1	0.071	-
5/16	0.3125	18	24	-	0.111	0.083	-
3/8	0.375	16	24	-	0.125	0.083	-
7/16	0.4375	14	20	-	0.143	0.1	-
1/2	0.5	13	20	-	0.154	0.1	-
9/16	0.5625	12	18	-	0.167	0.111	-
5/8	0.625	11	18	-	0.182	0.111	-
3/4	0.75	10	16	-	0.2	0.125	-
7/8	0.875	9	14	-	0.222	0.143	-
1	1	8	12	-	0.25	0.167	-
1-1/8	1.125	7	12	8	0.286	0.167	0.25
1-1/4	1.25	7	12	8	0.286	0.167	0.25
1-3/8	1.375	6	12	8	0.333	0.167	0.25

PRODUCTS

Inch system



ASME B 18.2.6 - Hardened Steel Circular (ASTM F436)

Grade:

2,5,8

Size:

1/2~1-1/2

Finished:

Plain, Zinc plated,
HDG, Black

Size	d		d _c			h		n
	min	max	Nominal Size	max	min	min	max	
1/2	0.531	0.5623	1.063	1.0943	1.0317	0.097	0.177	0.438
5/8	0.688	0.7193	1.313	1.3443	1.2817	0.122	0.177	0.547
3/4	0.813	0.8443	1.469	1.5003	1.4377	0.122	0.177	0.656
7/8	0.938	0.9693	1.75	1.7813	1.7187	0.136	0.177	0.766
1	1.125	1.1563	2	2.0313	1.9687	0.136	0.177	0.875
1-1/8	1.25	1.2813	2.25	2.2813	2.2187	0.136	0.177	0.984
1-1/4	1.375	1.4063	2.5	2.5313	2.4687	0.136	0.177	1.094
1-3/8	1.5	1.5313	2.75	2.7813	2.7187	0.136	0.177	1.203
1-1/2	1.625	1.6563	3	3.0313	2.9687	0.136	0.177	1.313

CASE SHOW

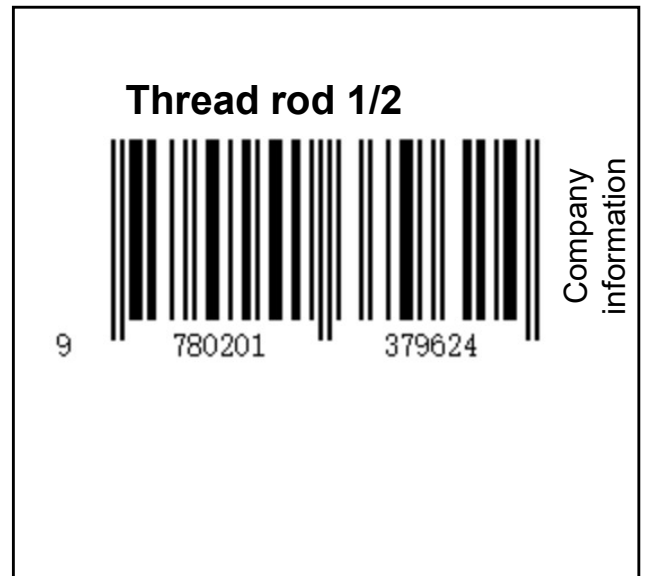
Customized package



We offer customers a variety of **customized labels**. Skilled packaging workers guarantee our **efficiency** and **beauty**.



Label sample



CASE SHOW

Customized package

Color box



- **MOQ:** 500PCS
- **Customization:** You can provide drawings according to you, or we design.

Color plastic bag



- **MOQ:** 1000PCS
- **Thickness:** 10 μ m
- **Type:** Self-sealing bag

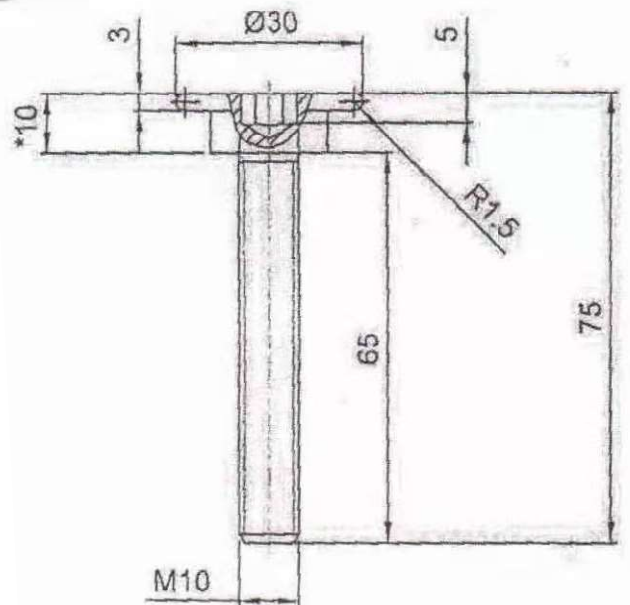
Transparent plastic bag



- **MOQ:** 500PCS
- **Thickness:** 8 μ m
- **Type:** Hot plastic seal

CASE SHOW

Customized products

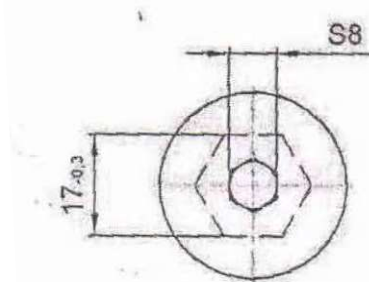


Name: flat head hexagon socket bolt

Size: M10*65

Grade:8.8

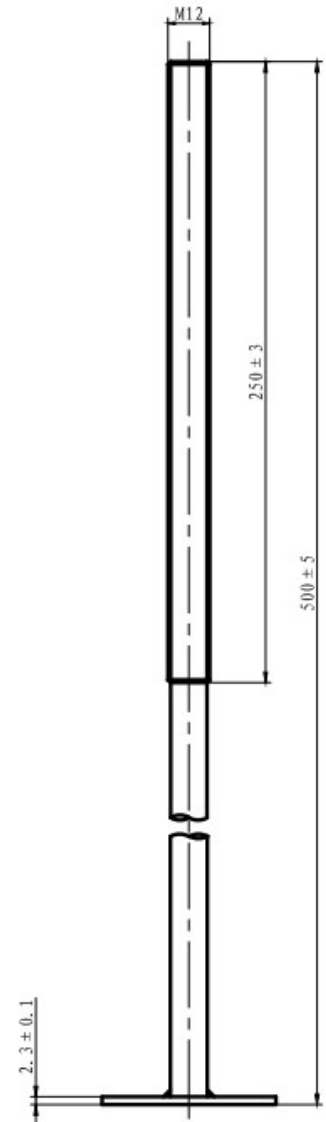
Lead time:40 days for one container



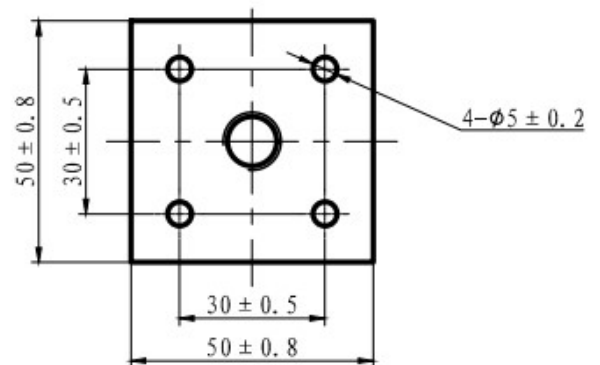
We support custom production. Including development of **new molds** should be produced in batches.

CASE SHOW

Customized products



Support customization processes include:
Welding, laser cutting, CNC lathe processing





**If you want to know more,
please contact us.**

Address: Building D, 21, Software Avenue, Jiangsu, China

WhatsApp /wechat: +86 17768118580

Email: sherry@jmet.com

Website: <https://jmet.en.alibaba.com/>

